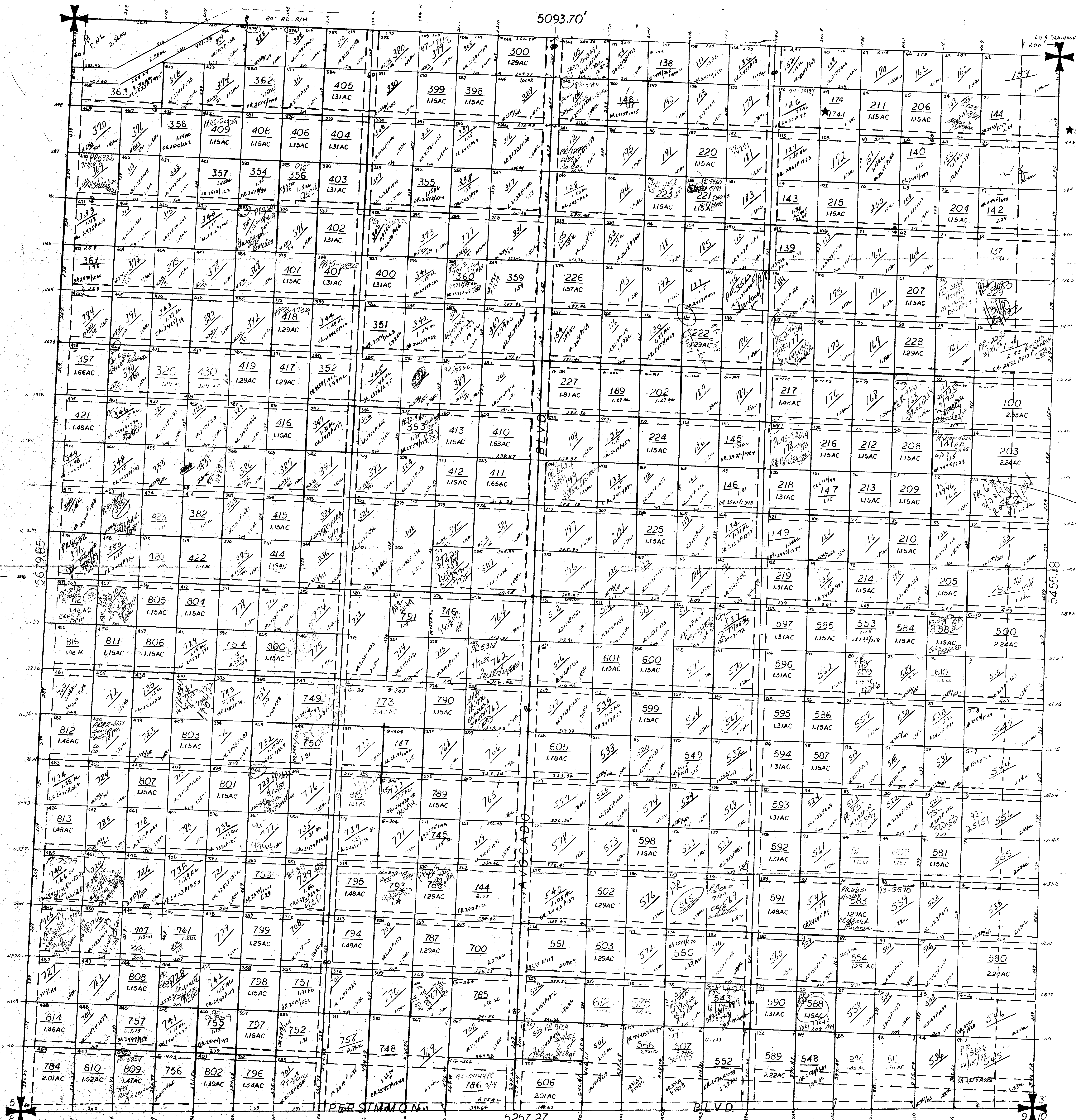


NOTE: TRACT/Lot NUMBERS ARE SMALL
NUMBERS IN LEFT CORNER.

5093.70'

5093.70'

N



★ UND 1/2 INT
OIL GAS MIN. RI-HT.

ALL OF THE SECTION IS IN THE COUNTY
AND CODED 00.

NOTE:
ROYAL PALM BEACH COLONY INC. LOT NUMBERS ARE
SHOWN IN THE UPPER LEFT CORNER OF EACH LOT.

NOTE:
ALL TRACT DESCRIPTIONS ARE AS MEASURED PARALLEL TO
THE EAST SECTION LINE EAST OF 80' EASEMENT AND PARALLEL
TO WEST SECTION LINE WEST OF 80' EASEMENT. ALL TRACTS
PARALLEL TO THE NORTH SECTION LINE.

NOTE: 2 COLUMNS 1/2 AC. BETWEEN
E 1350' 4 W 2210'
NOT DRAWN TO SCALE

NOTE:
NOT TO BE REPRODUCED IN
ANY FORM EXCEPT BY EXPRESS
WRITTEN CONSENT FROM THE
PALM BEACH COUNTY
PROPERTY APPRAISER
Information shown hereon is
compiled from the best available
sources and CANNOT be used
for surveys or land transfers of
any type.

Proof of Lot
8/68

PALM BEACH
COUNTY
REBECCA E. WALKER
PROPERTY APPRAISER

RGE	TWP	SEC	AERIAL
41	43	4	NO
SCALE			1" = 200'
DRAWN BY			BAP
UPDATED			

ur0130.igr
ROYAL PALM BEACH 443/41

R.P.B.C. - "G"